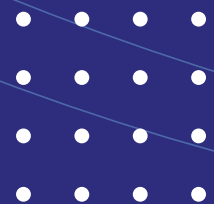
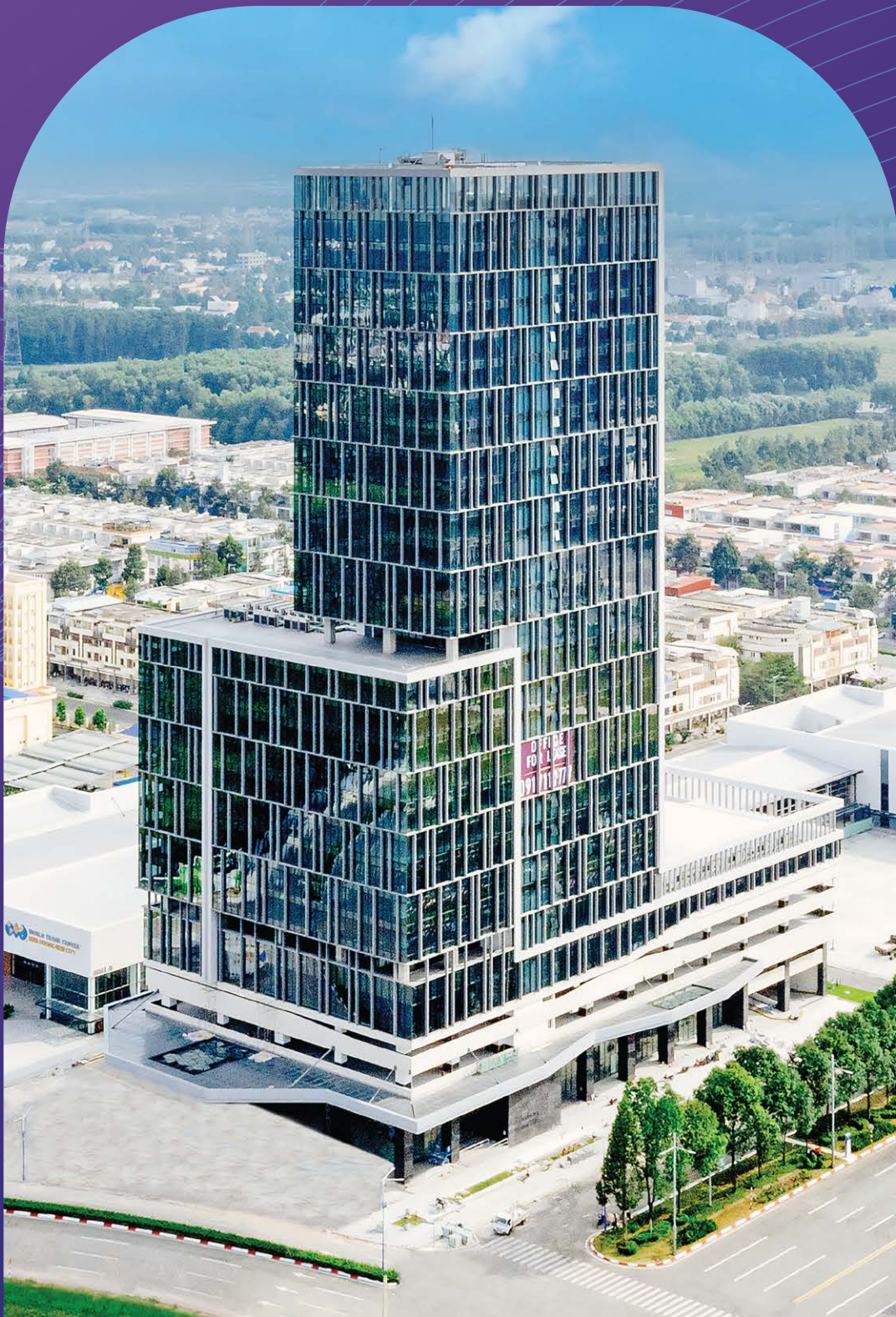
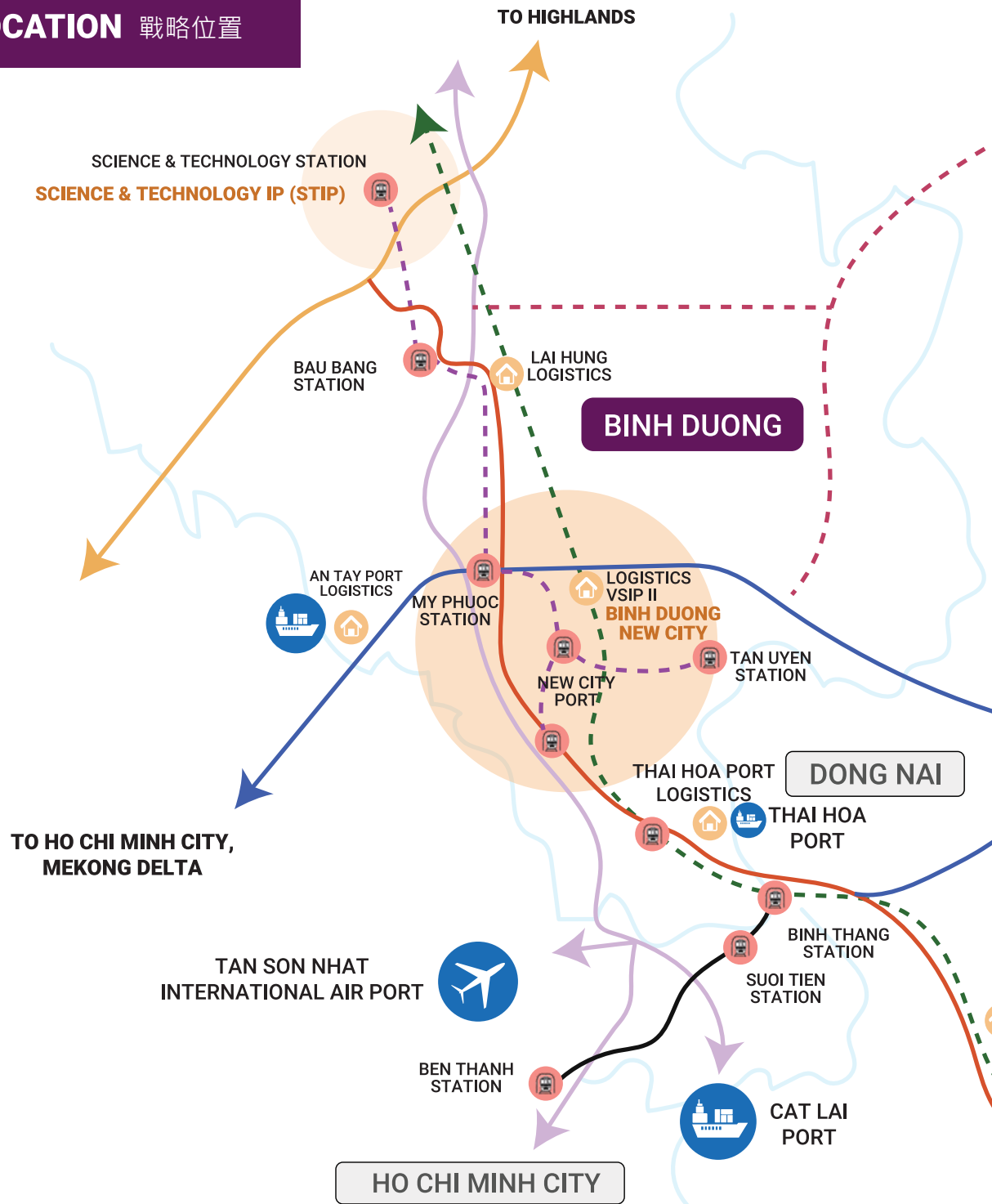


WTC TOWER

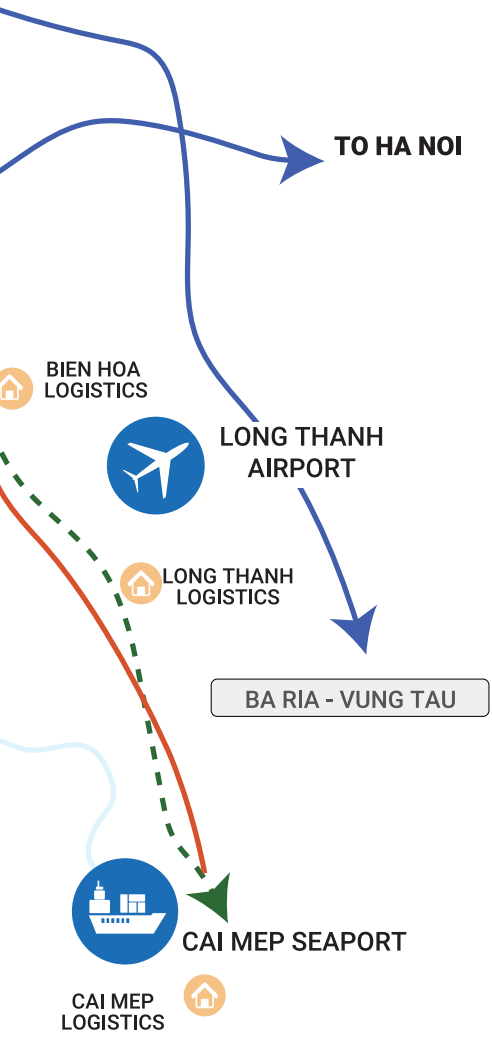
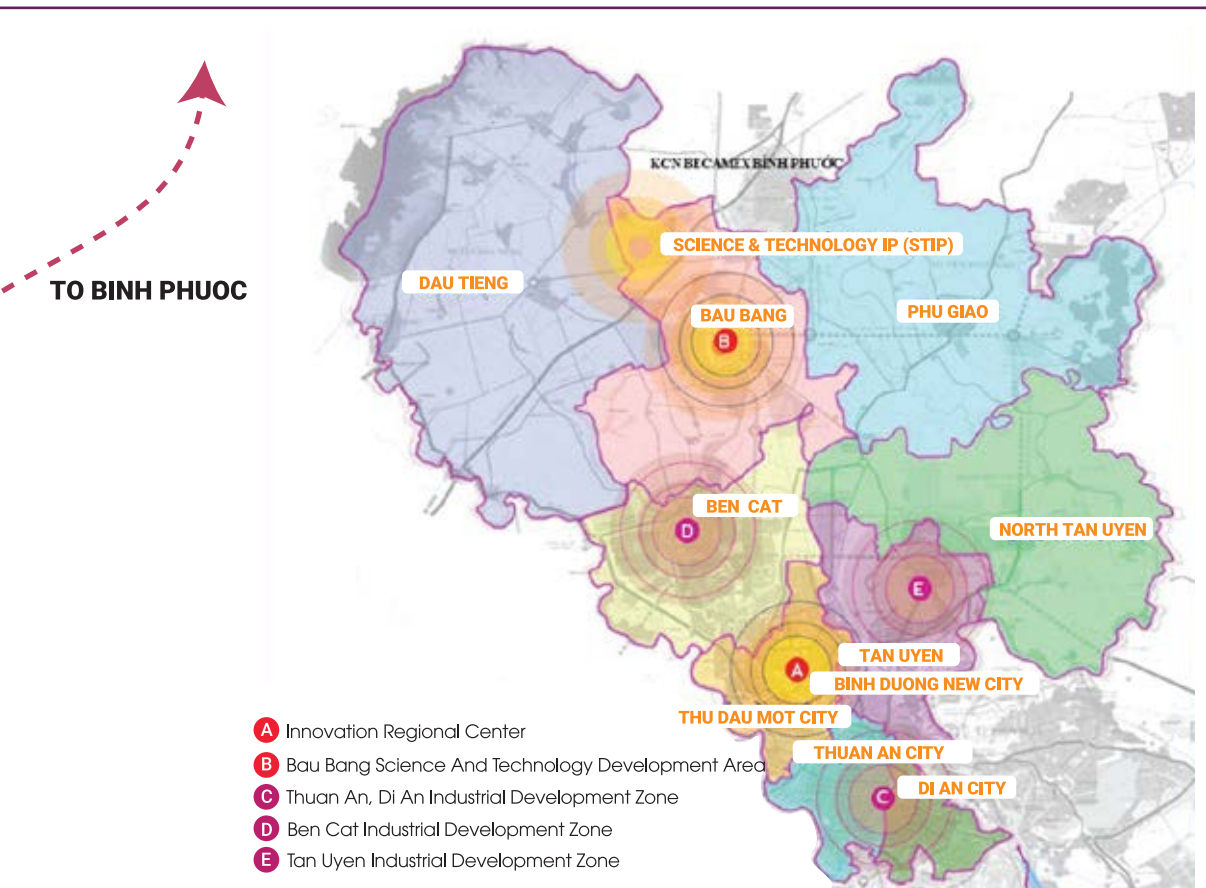
developed by **BECOMEX**



STRATEGIC LOCATION 戰略位置



- NATIONAL ROUTE 13
- RING ROAD NO.4
- BAU BANG - MY PHUOC - TAN VAN ROAD
- HO CHI MINH ROAD
- BIEN HOA - VUNG TAU TRANS-ASIA RAILWAY
- BAC TAN UYEN - PHU GIAO - BAU BANG - DONG PHU ROAD



BINH DUONG NEW CITY

Located at the heart of the Southern Key Economic Region, Binh Duong New City is positioned as the political, economic, cultural and financial center of Binh Duong, and the gateway to the neighboring provinces in the region. The project is developed according to the TOD (Transport Oriented Development) model – urban developments integrated with public transportation hubs – at the intersection of multiple arterial traffic routes and 2 metro lines in the near future.

位於在越南南方的重點經濟區中心，平陽新市鎮將成為平陽省的政治、經濟、文化、金融中心，作為平陽省和其他附近省份的連結門戶。此項目的發展規劃是按照TOD (Transport Oriented Development)的模型 – 發展都市與公共交通系統結合 – 與其他重要主幹路的交匯點以及將來2條捷運幹線。

THE NEW CENTER 平陽新市
OF CONNECTIVITY 鎮 地理位置



- | | |
|---|--|
| 1 WTC GATEWAY | 9 Sora Gardens |
| 2 WTC EXPO | 10 New City Sport Center |
| 3 Shinhan Bank | 11 Hikari Food Court |
| 4 Provincial Social Insurance | 12 Midori Park The View |
| 5 Provincial Administration Center | 13 Haruka Residence |
| 6 Becamex New city Hotel | 14 Viet Hoa International School |
| 7 Binh Duong Convention & Exhibition Center | 15 Nguyen Khuyen Secondary and High School |
| 8 Central Park | 16 Eastern International University (EIU) |



Provincial Administration Center



Hikari Food Court



Haruka Residence



Viet Hoa International School



A PRESTIGIOUS MIXED-USE BUILDING OF

OFFICE - CONVENTION - RETAIL IN BINH DUONG NEW CITY

平陽新市鎮高級辦公室-會議-貿易綜合大樓



A CREATIVE - INNOVATION SYMBOL

創新象徵

The building has a modern design style, which is the highlight of Hung Vuong Boulevard. The shape of the building is suitable for the master plan. The strong podium is the foundation for the high-rise block with large glass panels and sunshades to create aesthetic highlights as well as energy-saving and microclimate solutions.

此大樓具有現代化的建築設計風格，成為雄王大道的亮點。大樓的設計符合周圍景觀的規劃。堅固地基是高層建築之基礎，具有玻璃幕牆、遮陽板，從此創造美麗亮點及節省能源及環保。



GENERAL INFORMATION

綜觀信息



Address: Lot A9 Hung Vuong Boulevard, Hoa Phu Ward,
Thu Dau Mot city, Binh Duong

地址：平陽省·土龍木市·平陽新市鎮·和富坊·雄王大道A9

Construction area: 3,952 m²

建築面積：3,952平方米

Number of floors: 30 Floors + 1 basement

總樓層：30層樓+1樓地下室

Total floor area (GFA): 60,000 m²

總地板面積：60,000平方米

Project component: Grade B+ Office,
Convention & Retail

項目功能：B+級辦公室·會議&貿易

Expected operation: 4th quarter of 2022

營運時間：2023 年第一季度

MORE THAN A BUILDING

高級辦公室



Guaranteed security with entrance control technology
入口處採用監控保全系統保證安全



Illuminate public areas using Philips LED devices
公共照明使用PHILIPS LED工藝的設備



220 car parking spaces
360 parking spaces for motorbikes
Smart parking technology
220個汽車停車位
360個摩托車停車位
採取智慧停車技術



Power system 400/230V-3 phase,
5 wire, 50 Hz
電力系統400/230V-3相 · 5線 · 50Hz



Property management:
办公楼运行管理单位

CBRE



Backup power: **Back-up 100%**

備用電源：100%



Floor load capacity: **3kN/m²**

地板承載能力：3kN/平方米



Air conditioning system: **VRV system**

空調系統：使用VRV系統



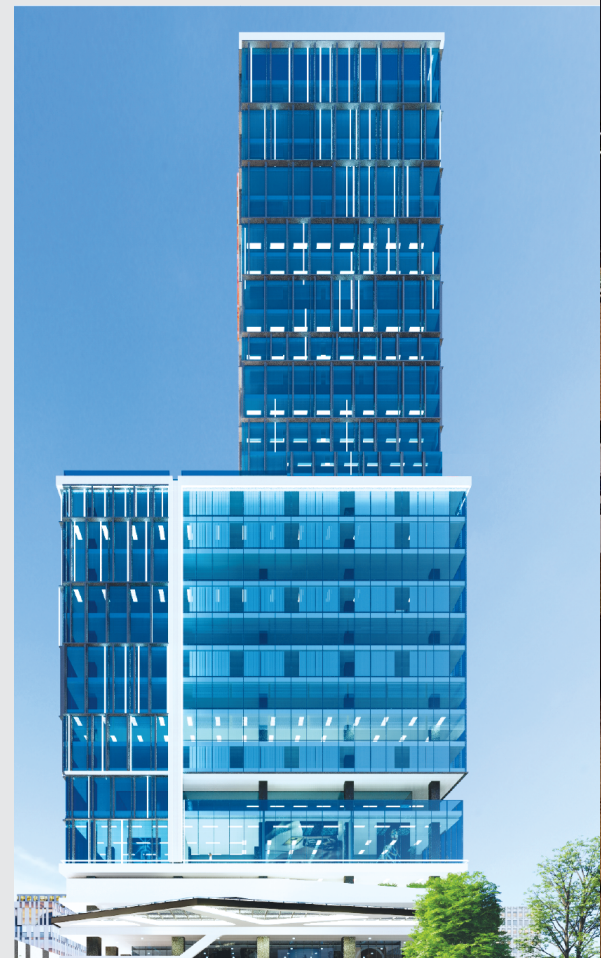
Glass facade: **3-layer glass**

玻璃幕牆：使用3層玻璃



06 passenger elevators,
02 conference elevators
and **01 Mitsubishi** service - fire fighting elevator

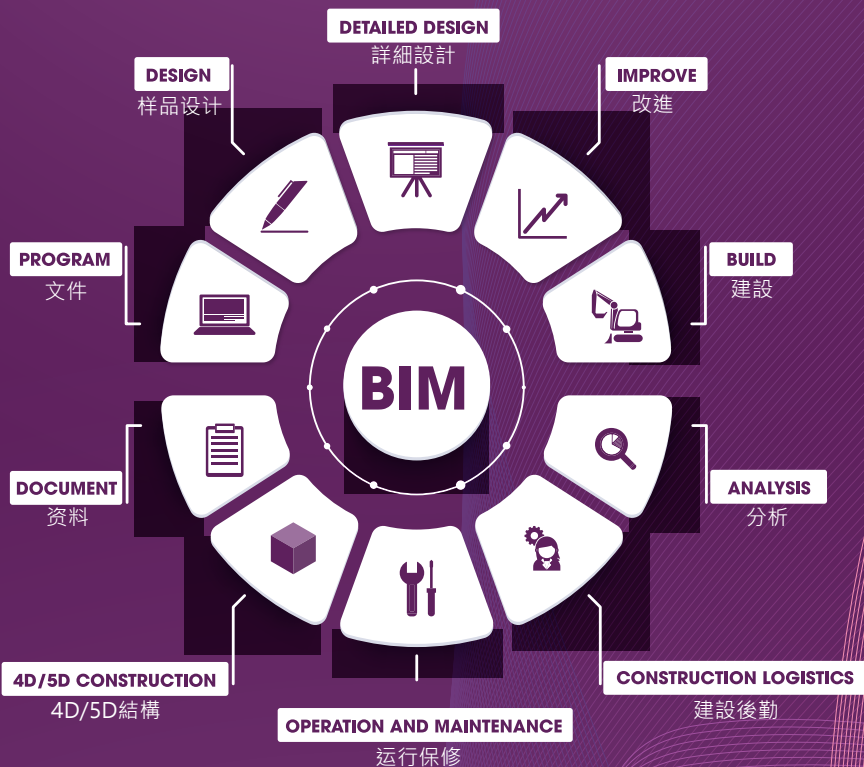
06個客用電梯·2個會議電梯以及
1個服務消防電梯（Mitsubishi牌）





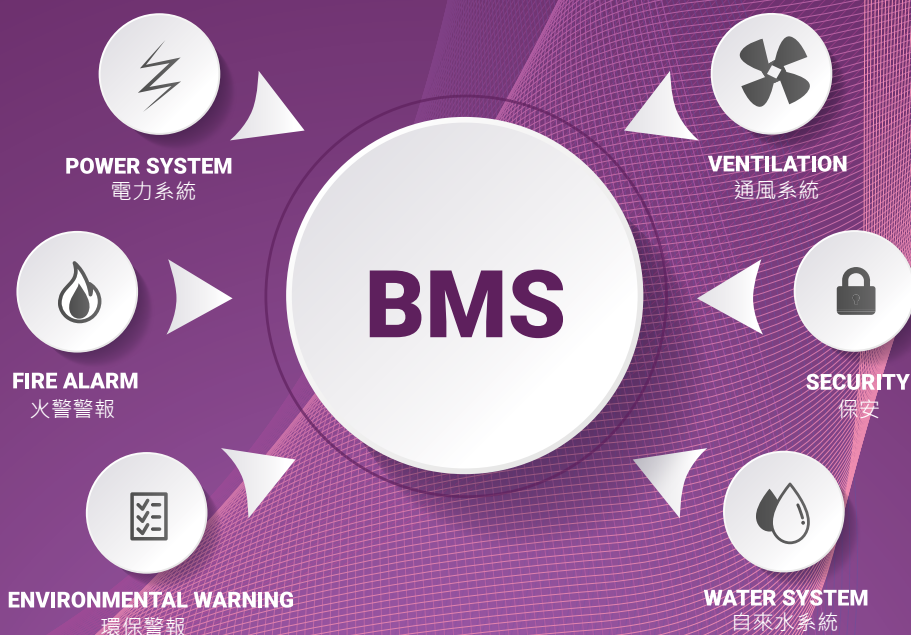
BUILDING INFORMATION MODELING (BIM)

BIM模型



BUILDING MANAGEMENT SYSTEM (BMS)

BMS系統



BMS (Building Management System) is a real-time, online and multimedia synchronization system. It includes central processors to ensure efficient operation of equipment in the building, saving energy and reducing operating cost. BMS (Building Management System)是一個即時、在線和多媒體的同步系統。此系統包括中央處理器保證大樓的設備獲得高效運行，節省能量並降低運行成本。

HIGH-QUALITY SERVICE

高級服務



TRADE AND SERVICES

服務和貿易

Bank, restaurant, convenience store
and coffee shop on the floor 1

一樓具有銀行·飯店·便利商店·咖啡店



HEALTH

健康

Training center & health clinic on the
floor 2

二樓具有培訓中心和醫療診所



CONNECTION

會議 & 對接

Conference - exhibition room on the
floor 5 & floor 9

5樓具有會議廳 - 展覽廳

SMART PARKING

智慧停車場



Conveniently and fastly placing car in the parking lot

方便快速停車



Conveniently look up information and parking conditions

方便檢查停車場的現況



Automatic toll collection system

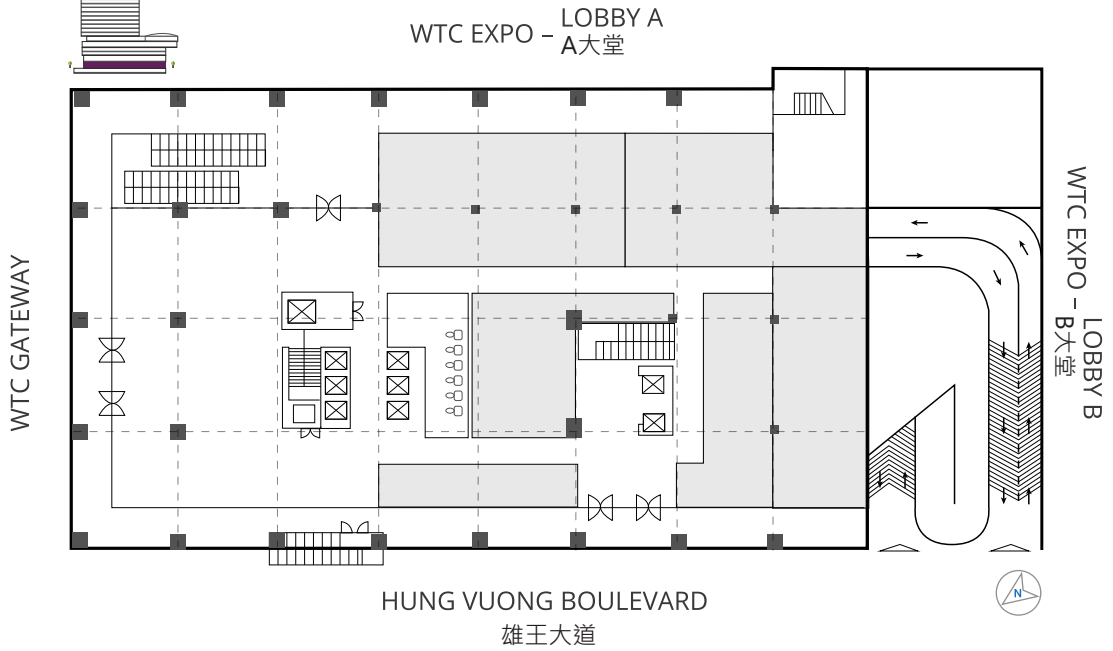
自動收費系統

RETAIL 貿易

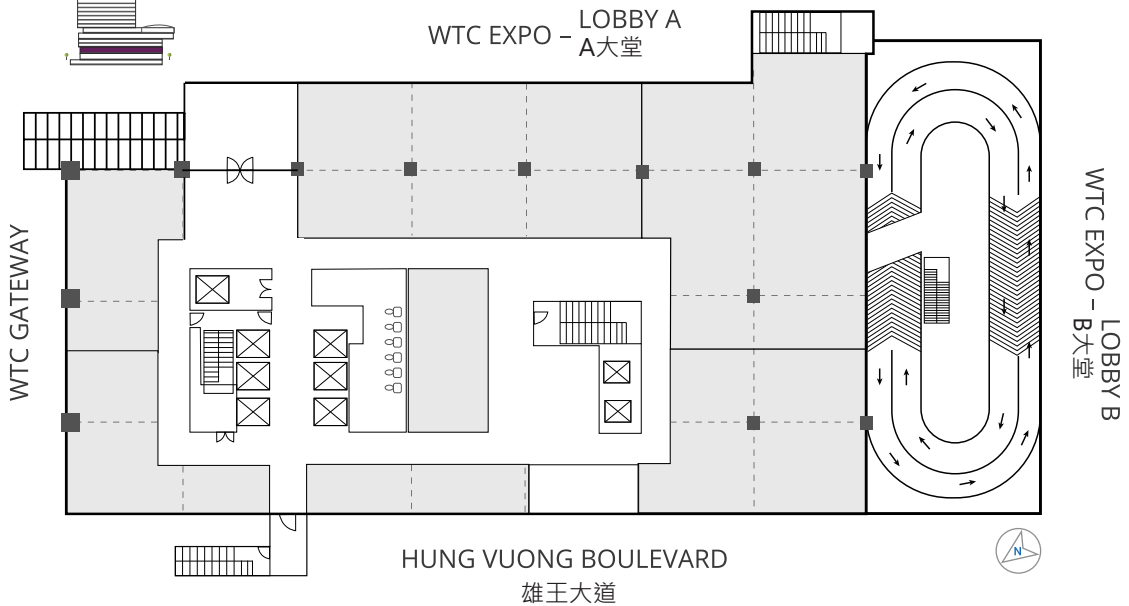
FLOOR PLAN 專區



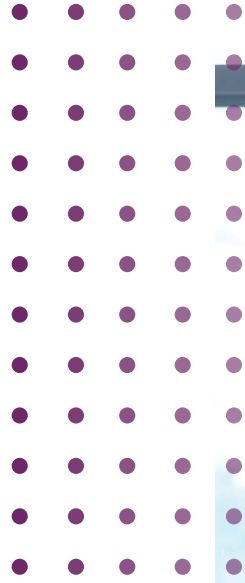
FLOOR 1 一樓



FLOOR 2 二樓



NOTE 備註
 **RETAIL SPACE**
 貿易專區

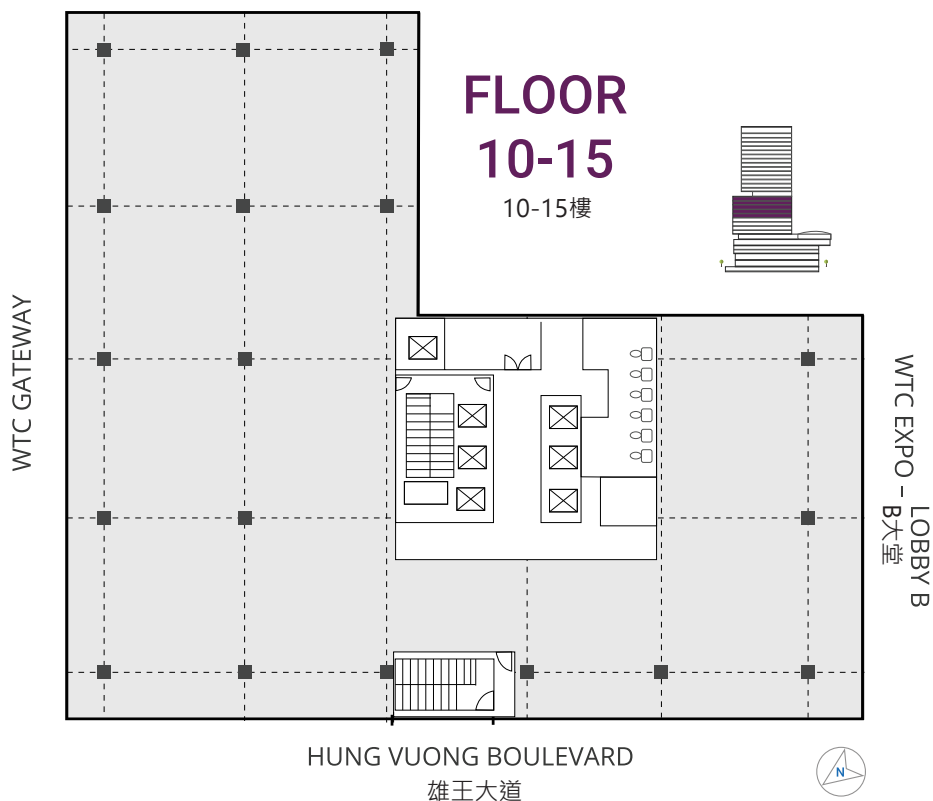


OFFICE 辦公室
FLOOR PLAN 專區

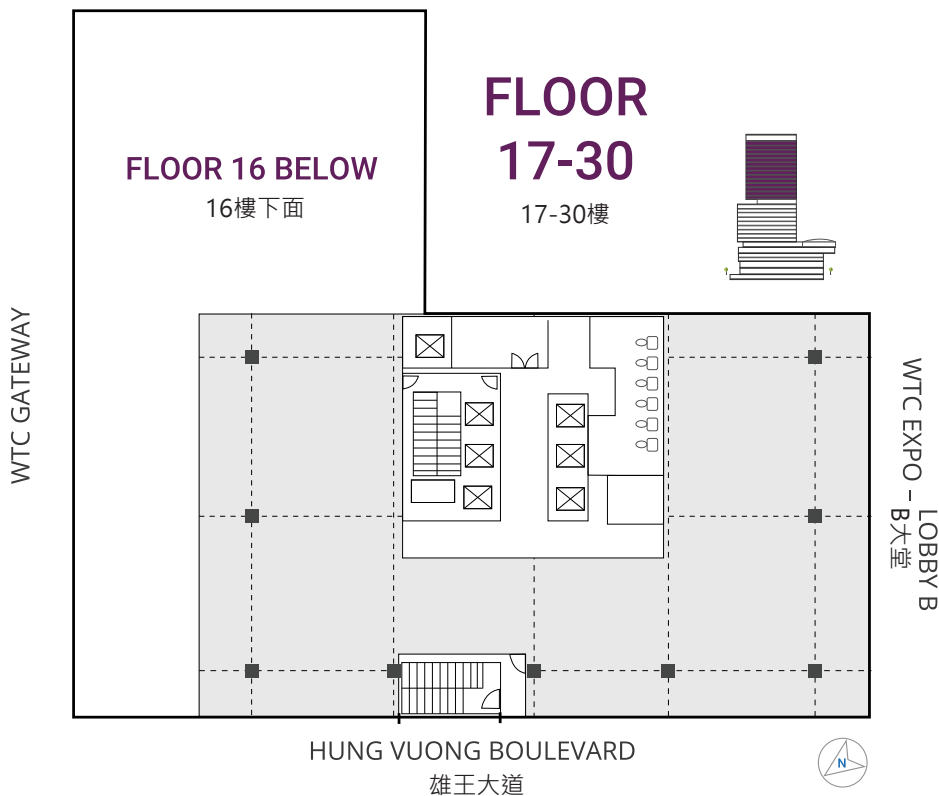


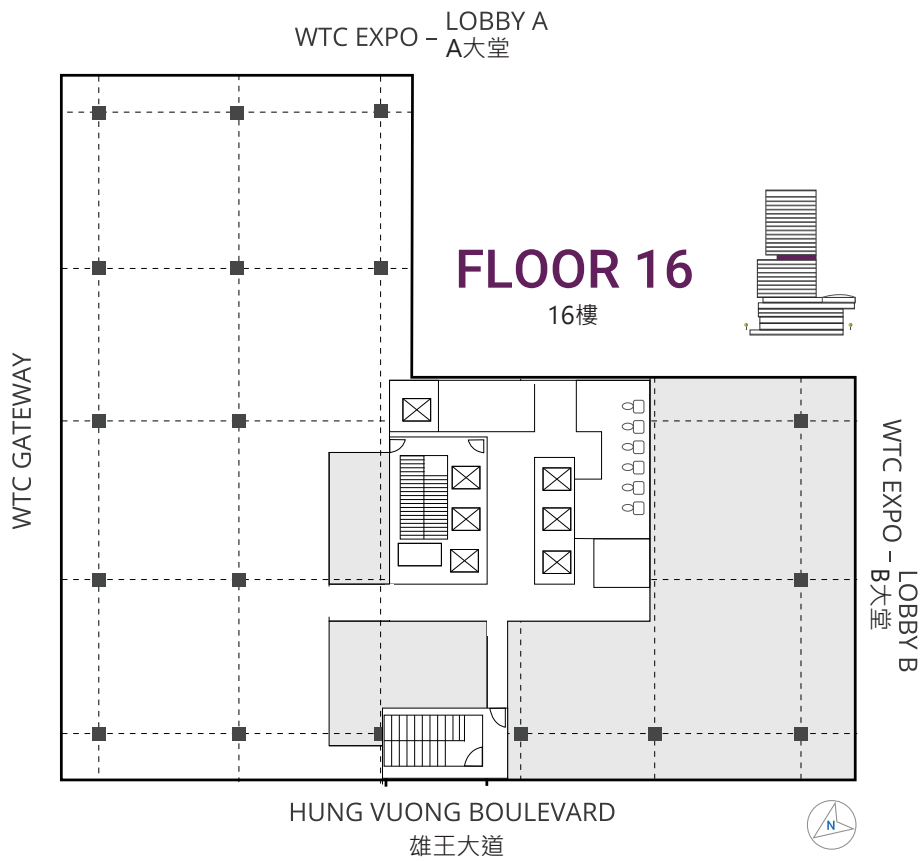


WTC EXPO - LOBBY A
A大堂



WTC EXPO - LOBBY A
A大堂





NOTE 備註
 **OFFICE FOR LEASE**
 出租辦公室





Opening of the Smart City
Development Project
開幕發展智慧城市項目

06/2009

Binh Duong New City is
approved by the Provincial
People's Committee with
detailed planning 1/500
平陽新市鎮的500/1規
劃獲得委員會批准

11/2016

09/2019

World Trade Center
Association approved
Binh Duong New City
World Trade Center to
become an official
member

平陽新市鎮世界貿易中心
獲得全球组织世界贸易中
心协会的認證

MILESTONE
各階段時間

Groundbreaking ceremony for World Trade Center Tower
世界貿易中心大樓動土典禮

27/3/2022

The expected opening day
預計落成並投入營運使用

10/2020

Topping out World Trade Center Tower
世界貿易中心大樓封頂典禮

1st QUARTER of 2023

WORLD TRADE CENTER TOWER A CORE MEMBER OF 平陽省的重要核心都市

WORLD TRADE CENTER BINH DUONG NEW CITY



WORLD TRADE CENTER BINH DUONG NEW CITY

As a member of the World Trade Center Association, the World Trade Center Binh Duong New City has a strong connection with the international network of over 314 WTCs in over 91 countries on 5 continents, with more than 1 million membered companies. Located right at the heart of the industrial hub of Vietnam, WTC Binh Duong New City is a destination for innovation and sustainability in the Southern Key Economic Zone of Vietnam.

是全球组织世界贸易中心协会的成員，將連接其他國際共同體
創新中心將會吸引及連結各投資者和優秀經濟專家來到越南。
將發展成為企業、組織、協會的經濟貿易-文化交流之平台。



WTC EXPO

WTC Expo is a potential venue for businesses in MICE activities and events:

- Indoor exhibition hall with a total area of 14,000 m²
- 8,000 m² outdoor exhibition space

WTC 展覽中心將成為各企業舉辦MICE活動的潛在地點。

- 室內展覽廳面積為: 14,000平方米
- 戶外展覽廳面積為: 8,000平方米



BINH DUONG CONVENTION & EXHIBITION CENTER

Binh Duong Convention & Exhibition Center (BCEC) is the ideal destination for international conferences, exhibitions and specialized training sessions with:

- Capacity of 1,400 guests
- 6 meeting rooms (40 to 1400m²)

將成為舉辦國際會議、展覽以及培訓課程的理想之地點。

- 可容納1,400名客人
- 包括6間會議室(面積40-1,400平方米)



BECAMEX

Vietnam's Leading Industrial & Urban Real Estate Development Group

發展工業&都市之越南領先集團



For over three decades, Becamex has played a pivotal role in transforming Binh Duong's remarkable industrialization and socio-economic development. Our successful industrial ecosystem development model has driven Binh Duong to become the country's leading manufacturing hub and has been scaled across the country.

The pioneering spirit instilled in our DNA drives us towards new frontiers. Looking ahead, our enterprising commitment is to continue shaping Vietnam's future urban and industrial landscape while contributing to local and national socio-economic and industrial development.

工業投資與發展總公司(BECAMEX IDC)發展工業都市基礎設施之越南領先集團,超過四十年的開發經驗·工業投資與發展總公司(BECAMEX IDC)的發展目標為單一服務窗口為完善生態系統·工業及都市一同發展,保證工業、服務、貿易結為一體。



Expand business and ongoing projects across the country (Binh Dinh, Binh Phuoc, Binh Thuan), projects in collaboration with partners (VSIP Bac Ninh, VSIP Hai Phong)

- 在越南全國內擴大開發的項目(平定、平福、平順)·已與合作伙伴的項目(VSIP 北寧、VSIP 海防)



Driving Innovation, Accelerating Growth. A Continual Journey Of Transformation and sustainable development.

- 持續創新·努力增強智能發展和永續發展。

LỄ CÔNG BỐ TOP 10 CÔNG TY BẤT ĐỘNG SẢN CÔNG NGHIỆP UY TÍN NĂM 2022



TỔNG CÔNG TY BECAMEX IDC





1

Ranked 1st - Top 10 most prestigious Industrial Real Estate Enterprises of Vietnam in 2021 & 2022

2021年、2022年 越南開發工業不動產企業第一名

50

Top 50 best listed companies in Vietnam 2021

2021年越南最佳上市公司前50強

67

Ranked 67th

Top 500 largest enterprises in Vietnam

越南前500大企業 第67名

WIDE RANGE OF ACTIVITIES
多樣化營運領域



Becamex International General Hospital



Dinh Hoa Social Housing



BW Factory



Eastern International University (EIU)

WTC TOWER

developed by **BECA MEX**

 Email: leasing@becamex.com.vn
 Hotline : 0917.111.777



Disclaimer

All information, figures, calculations, and images contained in this document are for illustrative purposes only and are subject to change without notice. All information herein is correct at the time of printing and does not form part of any offer or contract and neither the developer nor the agent(s) may be responsible for any inaccuracies.

免責聲明

此處包含的所有信息、數字、計算和圖像僅用於說明目的，如有更改，恕不另行通知。此處的所有信息在印刷時都是正確的，不構成任何報價或合同的一部分，開發商或代理商均不對任何不準確之處負責。